

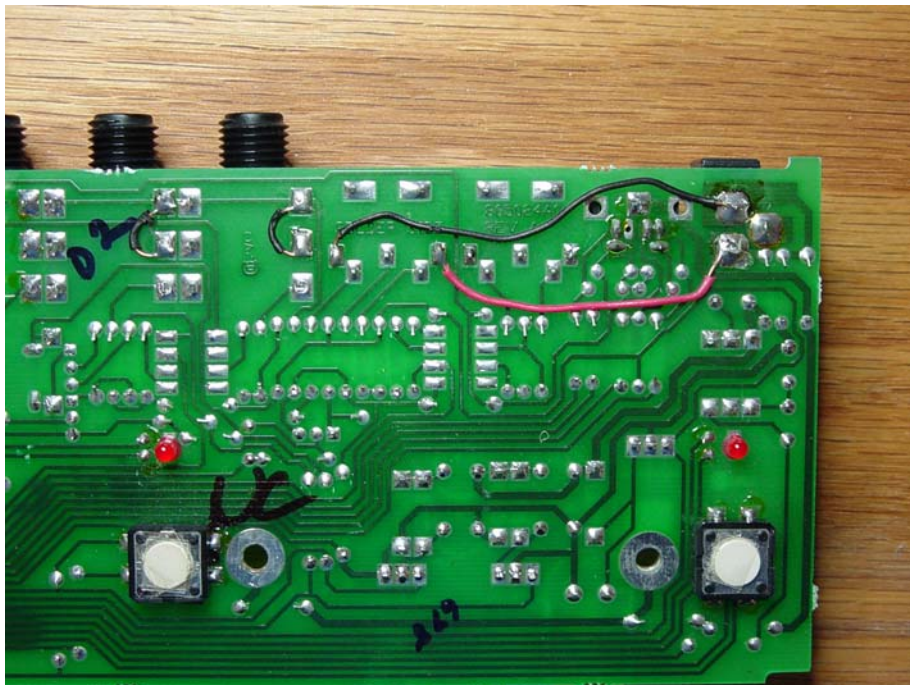
“Phantom Power” for a Digitech PMC10



A simple “Y” cable and some jumpers across the PC board can get the 9V AC from the factory wall wart transformer to the PMC10.

Pins 1 & 3 of the standard MIDI 5 pin DIN cable are not generally used. Some manufacturers use them to power their devices (Voodoo Labs DCX and Ground Control, for example). There is always a danger of energizing something you are not supposed to, or shorting out and ruining the power supply, so proceed only if you know the rest of your gear!

In a couple of PMC10's, I have added the long jumpers from the power supply pads on the right to pins 1 & 3 of the MIDI output connector jack. The pads are large, and not too difficult to solder.



For donors, I used some MIDI extension cables, with male and female 5-pin DIN connectors, and new 2.5mm ID, 5.5mm OD in-line jacks for the power connection. The MIDI (2, 4, 5) pins pass through, the power barrel jack is connected to pins 1 & 3 on the female DIN, and pins 1 & 3 on the male DIN are left open to protect the connected device. Liberal use of shrink tubing and tie wraps toughens up the connection. I could have gone with a 1U rack box, but raw ones are \$25, and eat up one more space.



One thing I don't care for is the exposed metal on the power jack. A wrap or two of electrical tape will keep the connection together in a road box, and the metal ring electrically isolated.



Pretty simple. I generally don't like to pair up power and signal in one bundle. You might want to keep the MIDI cable length as short as possible. I have made up a few extra Y cables.

Keith
Brighton_harbor@sbcglobal.net